



# WHAT IT'S ALL ABOUT

We often meet people who would like to commute or run errands by bike, but haven't yet given it a try. Biking is actually a lot safer and easier than you might think.

Biking in Cleveland: A Guide is here to help you take the next step towards incorporating biking as a part of your everyday life. In these pages you'll learn how to choose a bike, how it should fit, how to ride safely, useful resources, general tips, and information that will help make your commute a wonderful and fun experience.

Every time you choose to ride a bike instead of driving it contributes to a healthier, cleaner, better world for us all. The key is making your commute as safe, convenient, and as comfortable as possible. We hope what you learn in this guide will equip you with the knowledge to do just that.

Commuting by bike is not an all-or-nothing choice. You can ease into it. Try it once a month, for short trips to the store or work, then maybe eventually once a week. Before you know it you'll realize the benefits and want to do it regularly.

Oh and don't forget to support safe streets for cycling by becoming a card carrying member of Bike Cleveland. Not only will you get discounts at bike shops and local businesses but you will be supporting a nonprofit that is actively working to improve the places you ride. Learn more at [BikeCleveland.org/member](https://BikeCleveland.org/member).

Ride safely, legally, and as often as you can; be visible, courteous, and have fun!

Your friends at Bike Cleveland

**BIKING IN CLEVELAND: A GUIDE**, copyright 2023

Written by Justin Glanville. Designed and illustrated by Julia Kuo

Thanks to Brian Griggs, Krissie Wells, Alex Nosse and Jim Sheehan for their contributions to the Biking in Cleveland: A Guide.

# WHO SHOULD BIKE? AND WHY?

Here's the first thing you should know: Almost anyone can ride a bike.

Biking isn't just for fitness freaks, or for hip twenty-somethings in Portland who are angry about climate change.

Riding a bike for transportation, like driving or walking or taking the bus, is primarily about getting from Point A to Point B. Nothing more, nothing less.

Choosing to ride a bike doesn't mean you have to shun all other forms of transportation. It doesn't mean that you have to start biking every single day, or buy special clothes. Riding a bike is just another option for moving your body through space.

Here are a few reasons why we believe in the power of the bicycle:

## PARTICIPATION IN THE WORLD!

Biking gives you a way to truly notice, and be a part of, your surroundings. That new restaurant that opened up? That neighbor you haven't seen for a while? The bird singing in April when spring is finally on its way? You might miss them whizzing by in a car, but chances are you'll notice on a bike.

## SPEED!

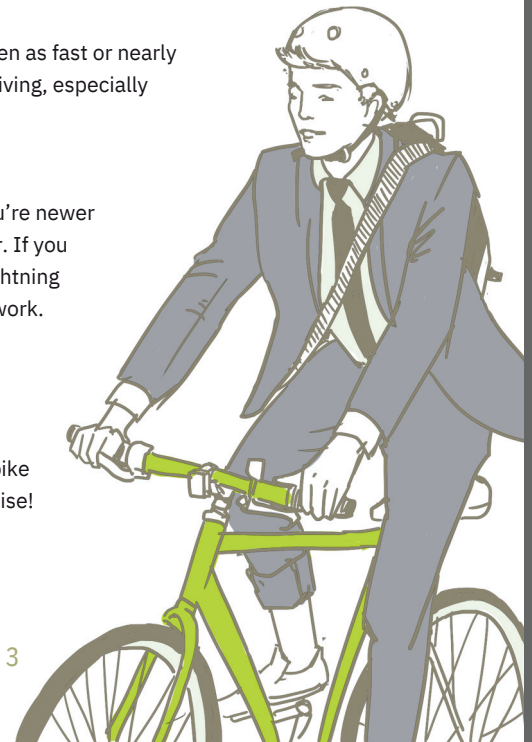
Riding a bike is faster than walking, and often as fast or nearly as fast as taking public transportation or driving, especially for short trips.

## FREE EXERCISE!

And the level of intensity is up to you. If you're newer to biking, maybe you go slower or not as far. If you are a fitness freak, maybe you pedal like lightning across the city, or commute all the way to work.

## FRIENDS!

The next time you hop on a bike, you may meet another friendly soul on two wheels, stopped at an intersection or in your local bike shop. You might not have met them otherwise!



### ROCK STAR PARKING, ALL THE TIME!

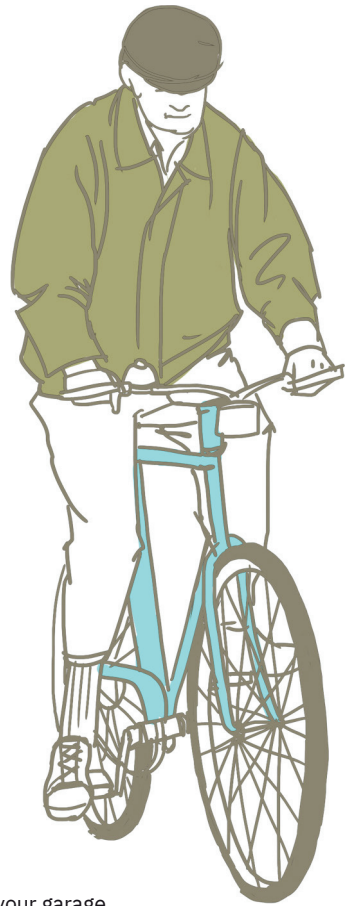
Bike racks or other places to lock your bike are available right at the door of your destination. No more worrying about getting a good spot, or feeding a meter (Hey, anyone got a quarter?).

### ENVIRONMENTALLY FRIENDLY!

Biking is often called the most efficient way of getting around, because it uses less energy than walking and far less energy than burning fossil fuels or generating electricity. And unlike fossil fuels, the type of energy it does use – yours! – is entirely renewable.

This guide is meant to help you ride your bike in a way that will keep you coming back for more: comfortably, safely and in as many kinds of weather as Cleveland can throw at you. Which we know is a lot.

You say you don't own a bike yet? We can help you there, too. So let's stop talking and get started riding!



## PICKING A BIKE

If you're new to biking or haven't biked for a while, you may be wondering what kind of bike you should use.

The truth is, whatever half-forgotten thing you already have in your garage or basement will likely be adequate for your daily transportation needs. That's especially true if you plan to travel mostly within a five mile radius of where you live.

### Myth

I feel like I need the most awesome bike ever to start biking!

Nope. Whatever you've got hiding in the basement or garage will probably do.

But if you happen not to own a bike yet, or you want to buy a new one, here's a quick breakdown of the three general types:

### ROAD BIKE



2. **MOUNTAIN BIKES** were originally designed for riding off-road, on rugged terrain. The treads on their tires are heavier than on road tires, and will work on softer surfaces – including unpaved ones. They hold up well for city riding, though you may not go quite as fast as on a road bike. Consider swapping out the tires for some with less knobby tread to increase your speed.

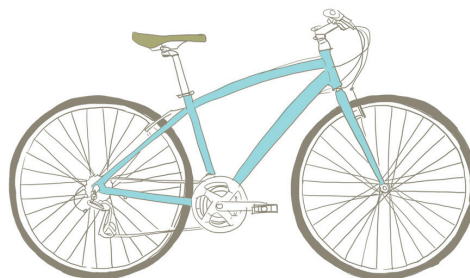
3. **HYBRIDS** are a combination of road bike and mountain bike. They're often recommended for beginning cyclists, and are also popular for casual or everyday use.

1. **ROAD BIKES** are designed for speed. They're lightweight, and work best on paved, smooth roads. Their trademark curved handlebars give you an option for changing your posture on longer rides. The handlebars ("drop bars") might be uncomfortable for some and can easily be switched to a flat handlebar.

### MOUNTAIN BIKE



### HYBRID BIKE



Of course, there are many subcategories of bikes in each of these three. To find out more about different kinds of bikes, or if you feel your bike isn't working for what you're trying to do, stop by a local bike shop or ask someone who's been biking for a while. They might even suggest a powered e-bike version of what's listed above.

A good bike shop or a knowledgeable friend can also help you fit your bike to your body, so that your ride is comfortable and safe. A sore back or shoulders may mean your bike needs to be adjusted. (Sore rear end? That goes away with time.)

**Interested in learning about E-Bikes, scan this QR Code to view our E-Bike Guide!**



# THE TEN MINUTE CHALLENGE

The 10 Minute Challenge is a simple way to add more biking to your life. It starts with the idea that for destinations within 10 minutes by bike from your starting point, biking is often the fastest, most practical option.

Let's do some simple math. At a casual pace, most people bike about 12 miles an hour. That means you can expect to go about two miles in 10 minutes. A car, at an average speed of 25 miles an hour, would travel that same distance in 5 minutes. In theory, that's a savings of 5 minutes for the car.

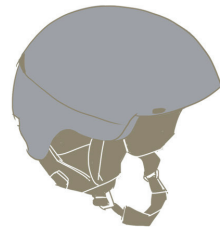
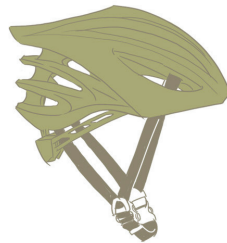
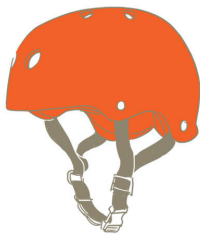
But the car also has to park. And it might hit traffic on a busy road while a bike could take a less-traveled route. Maybe it needs to stop for gas. You get the picture: Bye bye, extra 5 minutes.

What's more, the car runs on gas, which costs money and is harmful to the environment.

The 10 Minute Challenge says that for trips two miles and under, driving rather than biking doesn't save any time or money. It also doesn't save any energy – except your own. And many of us have more of that than we need!

It's something to think about the next time you're on your way to the supermarket, the bank, or the library... Or even to work, if you're fortunate enough to live so close.

## HELMETS



## Myth

Helmets always look incredibly dorky.

As biking becomes more popular, companies are manufacturing helmets in all kinds of styles and shapes. Not all of them look like neon-colored plastic mushrooms. Check your local bike shop for an option that works for you. The staff can even help you with the fit.

## SAFETY AND MAINTENANCE BASICS

Bicycling is safe and seems to be becoming safer. In 2010, the National Highway Traffic Safety Administration reported that people on bicycles accounted for about 2 percent of all traffic fatalities and injuries. There was a 29 percent decrease in bicycling fatalities between 1990 and 2010.

Still, there are a few smart and easy things you can do to make sure you're setting yourself up for an incident-free ride.

First, every once in a while, perform the ABC Quick Check to make sure your bike is in good working order. It's an especially good idea to do this when your bike has been in storage for a while.

Here are the steps:

**AIR.** Push down hard on your tire from above; it should not smooch down under your palm. Also, beware of cuts, gouges or dry-rot. Either patch the compromised spots or buy a new tire.

**BRAKES.** Stand over your bike, apply the brakes and push the bike forward hard. If the tires still roll forward, the brake pads are worn out or aren't engaging properly. They need to be adjusted or replaced.

**CHAIN.** Lift your bike from behind and give one of the cranks a spin. The bike's chain should tick smoothly along the chain ring. If it doesn't, or if it looks rusty, it probably needs to be lubricated with oil.

Also, while you're at it: Do a quick check of your bike seat, wheels and handlebars to make sure they're all tightly attached to the bike frame. If not, you can usually secure them with an allen wrench or a crescent wrench depending on your bike.

Visit your local bike shop about once a year for a tune-up.

Helmets are another safety measure. Think of them as the seat belt of the cycling world. The City of Cleveland has no law requiring helmets, but many of its suburbs require people under the age of 16 or 18 to wear them.

When you're fitting one to your head, make sure:

- The front of the helmet is covering the upper half of your forehead
- The points of the chin straps meet in a Y-shape right below your ears
- There's enough room below your chin that you can open your mouth to talk

HOW TO WEAR A HELMET



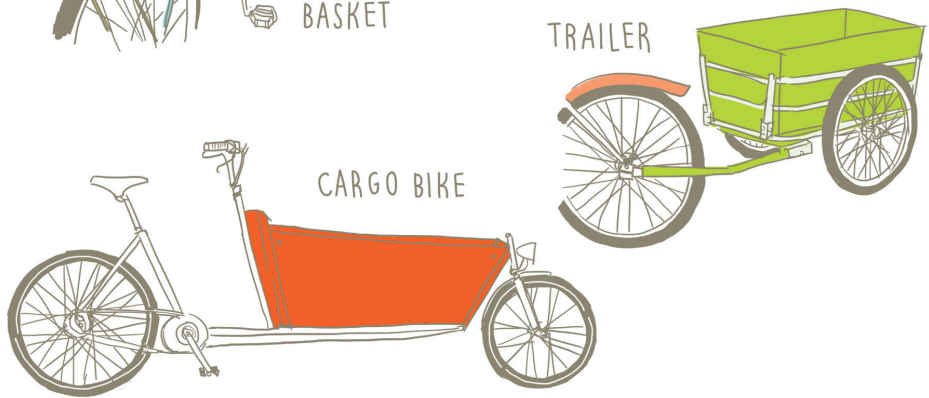
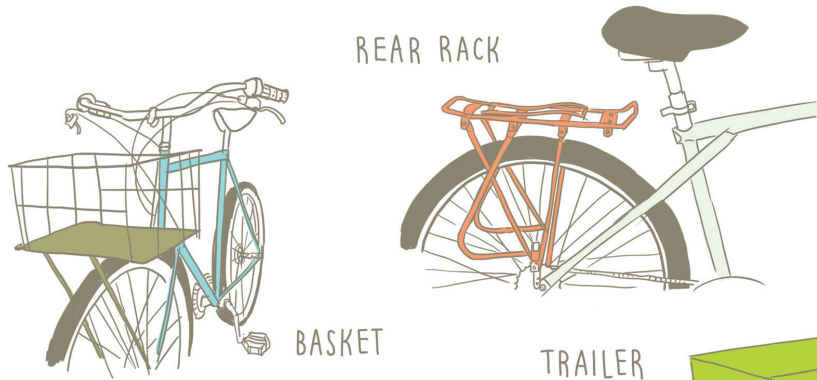
## CARRYING THINGS

As you start using your bike to run errands or commute, you'll probably have things you want to carry – groceries or books or a computer, for example. Most of the time, something you already own, such as a simple backpack or messenger bag, works just fine.

If not, there are some simple attachments that will take the load off your shoulders. For example, you might buy a rear rack that fits behind your seat, above the rear tire. There are also front racks. Or you could attach a simple basket to your handlebars – plastic flower optional.

If you become a serious bike errand-runner, or have a lot of books or supplies to lug to work or school, you might consider a small trailer that you haul behind you, or even a cargo bike.

Before you start riding, make sure what you're carrying doesn't throw off the balance of your bike. One thing you should never do? Strap grocery bags around your handlebars, as if they were the scales of justice. They aren't!



## SECURITY

One of the best investments you can make in your bike is to buy a good lock. Use the lock anytime you leave your bike out in a visible location – a sidewalk, for example, or even your own driveway or front porch.

The two types of lock that deter the greatest number of thieves are the U-lock and the hardened steel chain. You should avoid inexpensive coil locks: Most of them are thin enough to be cut with a pair of cutters.

Attach a U-lock to a bike rack (or other secure post) and both the frame of your bike and a wheel. You could use two U-locks, or a U-lock combined with a chain or heavy-duty cable, to cover both tires.

Hardened steel chains are longer and more flexible than U-locks. Like a U-lock, they should encompass the bike rack, frame and at least one tire. (Don't use the regular steel chains you can buy at home improvement stores for everyday use. They're not as strong or as cutter-proof as hardened steel chains.)

A couple of other tips for preventing theft: Leave your bike in a well-lit, highly-trafficked location where thieves are less likely to escape notice. Also, don't keep your bike locked up in any one place – your front porch, say, or a bike rack at school – for an extended period of time. That's a sign to thieves that you're not paying attention.

Finally, take a photo of your bike, record the serial number and be able to describe its model and year, in case you do have to report a theft to police. You can also put an identity card with your name, phone number and address in the hollow of your seat post or handlebars. If the bike turns up at a pawn shop or on Craigslist, this can help identify it.

Some cities require bikes to be registered – check your local laws to see if you live in one of them. If not, you should register your bike with the National Bike Registry at [NationalBikeRegistry.com](http://NationalBikeRegistry.com).



## PLANNING A ROUTE

You might think that the best route to take between, say, your house and the grocery store is the same one you'd take if you were driving. And it may be. But there are other factors you want to bear in mind when you're thinking about planning a trip on a bike. Here are a few tips, some more obvious than others:

- If they're available, choose streets with bike lanes or "sharrows" (short for "share-the-road arrows"). Cars will be more accustomed and deferential to bikes on these routes. (See p.13)
- Residential roads often have less traffic – or at least calmer, slower-moving traffic – than main arteries. Example: Franklin Boulevard on Cleveland's West Side can be a peaceful alternative to Lorain Avenue, a major crosstown artery. Residential roads also have fewer cars pulling in and out of store parking lots or street parking spaces.
- Wide roads are a mixed bag, depending on volume of traffic. Sometimes they're good because there's more space for bikes and cars to coexist. But sometimes (e.g. Chester Avenue between Downtown Cleveland and University Circle) they become quasi-freeways, and are unpleasant to bike.



- Hills that are no sweat in a car can be a real slog on a bike. Is there a route you can take that will allow you to stay on flat roads, or ones with milder grades?
- Choose roads with fewer traffic lights. It's inconvenient and inefficient to stop and start a lot. (And yes – in case you were wondering, Ohio law says bike have to stop at stoplights and stop signs, just like cars do!)
- Consider going a bit out of your way for a more scenic ride – through a park, for example – or to vary your views. The few extra minutes you add may be worth the eye candy or nature therapy you get in return.

Beyond that, trial and error is the name of the game, just like finding the best route in a car. Try a few options and see what works best for you!

**Note:** Some websites, including Google Maps, offer automated route advice for people on bikes. These can be a good place to start, but be aware that many of these sites use incomplete data or automated formulas that can lead you astray.

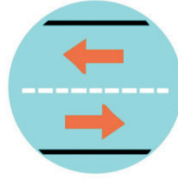
# RIDE SMART, RIDE TOGETHER

## RIDE ON THE ROAD



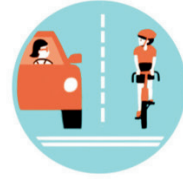
Let pedestrians rule the sidewalk, ride in the road

## RIDE WITH THE FLOW



Ride with the flow of traffic (ORC 4511.25)

## RIDE WITH CONFIDENCE



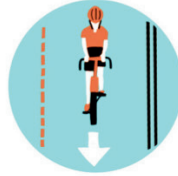
Make eye contact with motorists and then signal your intentions to earn their respect.

## BE BRIGHT



Cyclists must use bike lights at night: white for the front, red for the back (ORC 4511.56).

## TAKE THE LANE



Ride as far to the right as is safe, but take the lane when cars cannot pass you safely. Travel in a straight line, be visible, do not weave in and out of parked cars or ride between lanes of moving traffic (ORC 4511.55).

## DON'T GET "DOORED"



Stay out of the "door zone" of parked cars. This is especially important in business districts.

## FOLLOW THE RULES OF THE ROAD



Bikes are legal vehicles and should be treated and act as such (ORC 4511.01).

## BE PREDICTABLE



Use hand signals when turning and stopping if it is safe to do so. (ORC 4511.39).

## FIND A BIKE BUDDY



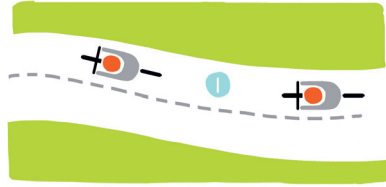
If you are new to cycling, ride with a friend. If your friend is new, offer to take them on a ride to "show them the ropes."

Call your local city hall if you notice obstacles such as potholes, sewer grate gaps, aggressive drivers, or dangerous intersections. Also email Bike Cleveland ([info@bikecleveland.org](mailto:info@bikecleveland.org)) so we can follow-up.

## ROUTE TYPES AND FEATURES

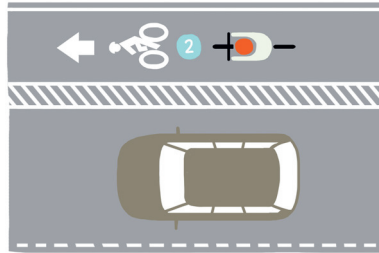
### 1. TRAILS & SIDE PATHS

Dedicated off-street routes for cyclists and pedestrians. Great for safe travel at slower to moderate speeds. Be courteous and use a bell to alert other users that you are passing.



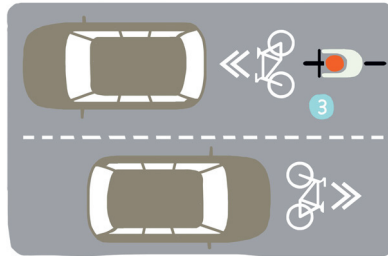
### 2. BUFFERED BIKE LANES

On-road lanes for bicycles that include an extra amount of painted off space as a divider between riders and vehicle traffic for added safety.



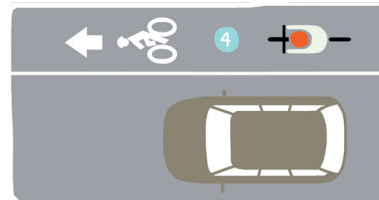
### 3. SHARROWS

Pavement markings that look similar to a bike lane symbol, but are placed in a shared-use travel lane. Sharrows remind people that bicycles have every right to ride in the travel lane when needed.



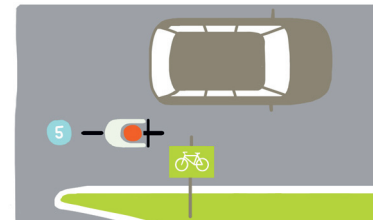
### 4. CONVENTIONAL BIKE LANES

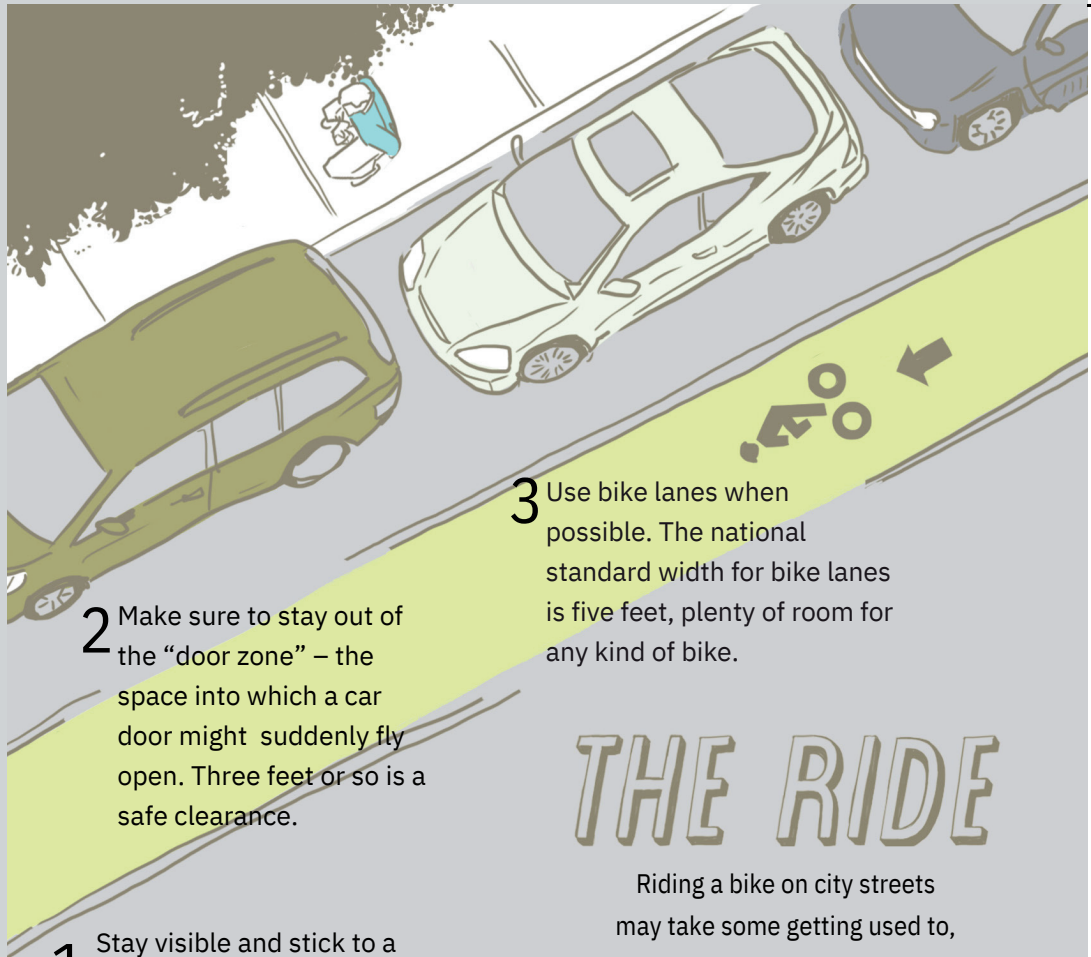
Still a dedicated lane for bikes, but on a narrower road where a buffered lane isn't feasible.



### 5. BIKE ROUTES

Used to direct cyclists along common routes, often with extra signage for both riders and drivers to share the road with one another safely.





**2** Make sure to stay out of the “door zone” – the space into which a car door might suddenly fly open. Three feet or so is a safe clearance.

**3** Use bike lanes when possible. The national standard width for bike lanes is five feet, plenty of room for any kind of bike.

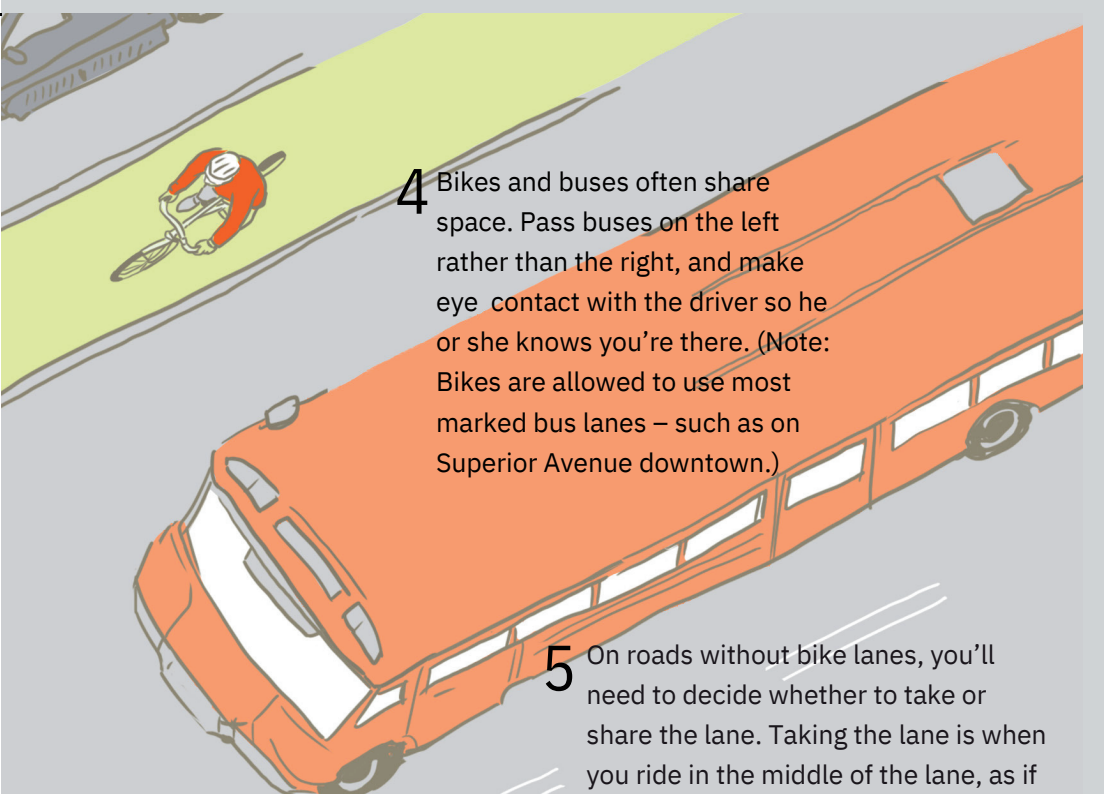
**1** Stay visible and stick to a single straight path. Avoid veering between a parking lane and a lane of active traffic, because drivers may not see you.

## THE RIDE

Riding a bike on city streets may take some getting used to, but ultimately it’s no more complicated or dangerous than driving a car. The key rules of thumb, as with driving, are to be visible, be cooperative and be aware.

**8** Wave to drivers behind you if you want them to pass. This is a great way to build solidarity between diverse road users.





**4** Bikes and buses often share space. Pass buses on the left rather than the right, and make eye contact with the driver so he or she knows you're there. (Note: Bikes are allowed to use most marked bus lanes – such as on Superior Avenue downtown.)

**5** On roads without bike lanes, you'll need to decide whether to take or share the lane. Taking the lane is when you ride in the middle of the lane, as if you were a car. Don't worry, it's completely legal! You may want to do this when you're in slow-moving traffic, or when there isn't enough room for you to share the curb lane. Or share the lane by riding to the side.

**6** Whenever possible, be sure you can see over the vehicle in front of you. That means you're visible in return. Avoid riding behind tall trucks and buses.



### Myth

Isn't it safer to ride against, rather than with, traffic because drivers are more likely to see me?

No way. Riding against traffic is both illegal and dangerous. Always ride with the flow of vehicular traffic.

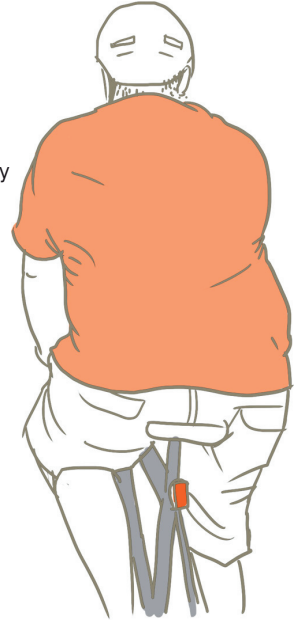
**7** Sidewalk are for pedestrians, not people on bikes!

## BIKING TO WORK

Biking to work can be a great way to save money on gas or transit fare while also getting some free exercise.

You can make the idea of a bike commute less intimidating by trying it first in only one direction. Use your normal mode of transportation to get to work – but bring your bike along. Then ride your bike home. This will let you see how long the trip takes and experiment with a route. (If you left your car at work and don't feel like biking the next morning, you can take public transit or carpool.)

If you're worried about being sweaty when you get to work, a few simple strategies can help. The ideal solution, of course, is to shower when you get to work. But for many people, a change of clothes and some deodorant will do the trick – along with maybe a few baby wipes for your face and armpits.



Some people “bike pool” with a group of friends who all work in the same part of town, or find a “bike buddy.” This gives you someone (or a group of people) to talk to during your ride, will make you more visible to cars – and give you moral support to stick to biking, like a workout partner. You can put together a bike pool or find a bike buddy through our regional planning organization's, NOACA, Gohio Commute Challenge at [Gohiocommute.com](http://Gohiocommute.com); or by posting Facebook or other social media site.

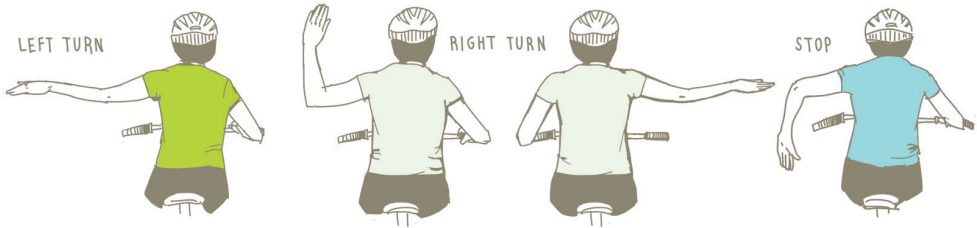
Also, see the Transit and Biking section (p.19) for tips on how to make your trip to work manageable by combining modes – a bike with a bus, for example.

### Myth

If I start to get all serious and ride my bike to work, don't I need special clothes? Like bike shorts and fancy shoes?

Special clothes can make your ride more comfortable, but they're not at all necessary. Throw on a few layers and some close-fitting pants, and you're good to go. You may be changing when you get to work anyway. (For more about what to wear for biking in different types of weather, see p.18)

# INTERSECTIONS AND TURNING SIGNALS



At intersections, bikes must follow the same rules that apply to cars. They must stop at stoplights and stop signs, for example, and yield to pedestrians in crosswalks.

If you want to turn, and you aren't riding in a designated turning lane, you should signal first. The sign for a left turn is an outstretched left arm; the sign for a right turn is a bent left arm or a straight right arm. If you are in a designated turning lane, Ohio law says you don't need to signal, and in fact that you shouldn't signal if you need both hands to make a safe turn.

For left turns you act no different than a car, moving into the left turn lane or the center of a single lane. If you aren't comfortable merging to the left to make the turn, or if traffic is too heavy, you can stay to the right, crossing the street in front of you first and then the lane perpendicular to you (known as the Copenhagen Left).

Mirrors can be very helpful, especially when riding in heavy traffic, because they keep you informed about what's going on behind you. Just attach one to your handlebars or helmet. Even if you do have a mirror, you should look behind you before changing lanes – just as in a car. Practice this a few times so you can do it without swerving.

## RIDING AT NIGHT

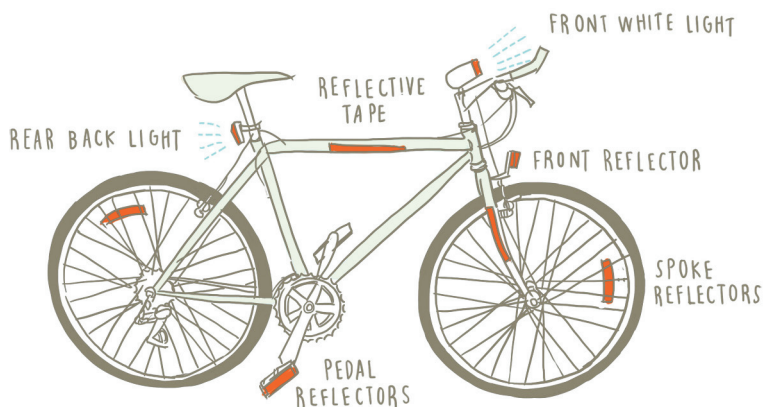
The key to riding safely at night is to make both yourself and your bike visible.

### YOURSELF.

Old-school reflective vests are an effective option – but if you don't like the way they look, there are a lot of other ways to make yourself seen. Wear light-colored clothing (white is best), and cut up some reflective tape and attach it to the backs of your pant legs or shoes.

## YOUR BIKE.

It's actually state law to attach lights to both the front and back of your bike if you're riding at night (white blinking lights for the front, red blinking ones for the back – just like on a car). You can also put reflective tape on the pedals and the frame, and make sure your pedals have reflectors – and that they're not caked with mud or dirt! Tires with reflective sidewalls, along with reflectors and lights that attach to the spokes of your wheels, will make you more visible from the side.



## RIDING IN RAIN AND SNOW

This may come as quite a shock, but Cleveland gets a lot of rain and snow. Fortunately, both forms of precipitation are survivable on a bike.

In snow, wear a few layers and some snugly fitting gloves. Don't overdress! Remember that you'll be exercising, and it's easy to overheat on a bike. Instead, think what you'd wear if you were going jogging in chilly weather: maybe a shirt or two, a sweatshirt and or light jacket. You're likely to regret bundling up in your puffy down coat and wool scarf.

Moderate or heavy rain is actually more difficult to negotiate than snow, because the drops can get in your eyes and no one is comfortable riding sopping wet. Still, a waterproof jacket and pants will keep most of the water at bay, and a set of fenders will keep rain puddles from spraying your feet and back.

Another option, if you're a new rider or find yourself caught unprepared in a storm, is to hop on a bus (all buses in Cleveland have bike racks), or call a friend to come pick you up.

## TRANSIT AND BIKING

Coupling public transportation with biking is a great way to expand the distance you can cover without a car.

In Cleveland and Cuyahoga County, all RTA buses are equipped with bike racks on their fronts. Using one for the first time can be daunting, but all you need to do is:

1. Squeeze the release lever on the top of the rack
2. Pull it down toward you
3. Place your bike in one of the slots
4. Secure the tire with the spring-loaded J-hook

The bus driver can also help you if you're confused.

Bikes are now allowed on board Rapid trains at ALL times – not just outside rush hour, but it is at drivers discretion based on available space. If you're taking your bike on the train, be considerate of other riders and stand with your bike in a place where you're not blocking seats or doors.

You could even think in terms of the 10 Minute Challenge: Bike two miles or less to a bus stop or train station, then take transit the rest of the way to your destination. It's the Park-n-Ride concept, but with a bike instead of a car.

## SEE YOU ON THE ROAD!

By bicycling around town, you're serving as an advocate in action, showing other potential bicyclists by your example just how viable, easy, and fun it is to ride a bike. Join Bike Cleveland and help us continue to encourage more people, like you, to experience the joys and benefits of riding a bike. Visit [BikeCleveland.org](http://BikeCleveland.org) to join the movement and to volunteer.

With your support, through membership and by volunteering, Bike Cleveland will continue to make our streets safer and our community more bicycle-friendly.

Bike Cleveland also offers plenty of opportunities for you to stay connected to the cycling community, including resources such as stolen bike reporting, accident reporting, a public forum, local cycling news and much more. Get involved, take action and stay engaged by visiting [BikeCleveland.org](http://BikeCleveland.org).

See you on the road!

# THE EMERALD NECKLACE

## AND ACCESS POINTS



## LOCAL BIKE SHOPS

### ALL AROUND CYCLERY

46 Ravenna Rd.  
Hudson, OH 44236  
330-653-8799

### BEAT CYCLES

15608 Detroit Ave.  
Lakewood, OH 44107  
440-799-8788

### BANANAS FOR BIKES

21936 Lakeshore Blvd  
Euclid, OH 44123  
216-401-6030

### BROADWAY CYCLERY

665 Broadway Ave.  
Bedford, OH 44146  
440-735-2453

### BIKE AUTHORITY

7979 Broadview Rd.  
Broadview Hts, OH 44147  
440-546-9966

### BLAZING SADDLE CYCLE

7427 Detroit Ave.  
Cleveland, OH 44102  
216-218-1811

### BLIMP CITY BIKE AND HIKE

1675 Merriman Rd.  
Akron, OH 44313  
330-836-6600

### CAIN PARK BICYCLE

1904 Lee Rd.  
Cleveland Heights, OH 44118  
216-320-0209

### EDDYS BIKE SHOP

3707 Darrow Rd.  
Stow, OH 44224  
330-688-5521

2830 Bishop Rd.  
Willoughby Hills, OH 44092  
440-943-2453

25140 Lorain Rd.  
North Olmsted, OH 44070  
440-779-1096

3991 Medina Rd.  
Montrose, OH 44333  
330-666-2453

19955 Detroit Road  
Rocky River, OH 44116  
1-440-356-5705

**ERNIE'S BIKE SHOP**

1325 Portage St. NW  
North Canton, OH 44720  
330-494-5323

135 Lake Avenue NW  
Mssillon, OH 44647  
1-330-832-5111

**FALLS WHEEL AND  
WRENCH BIKE SHOP**

2445 State Rd.  
Cuyahoga Falls, OH 44223  
330-928-0533

**GEMINI CYCLE CENTER**

4936 Everhard Rd. NW Canton,  
OH 44708  
330-499-5900

**FAIRVIEW CYCLE**

22230 Lorain Ave.  
Fairview Park, OH 44126  
440-734-2266

**OUTSPOKEN E-BIKES**

6477 Pearl Road  
Parme Heights, OH 44130  
216-465-1102

1829 Merriman Road  
Akron, OH 44313  
1-216-327-1588

**ENCORE CYCLES**

296 Moore Road  
Avon Lake, OH 44012  
1-440-961-1444

**GEAR UP VELO**

6596 Brecksville Rd.  
Independence, OH 44131  
216-232-4300

**JOY MACHINES BIKE SHOP**

2605 Detroit Ave.  
Cleveland, OH 44113  
216-394-0230

**KENT CYCLE**

115 Lake St.  
Kent, OH 44240  
330-677-0600

**MARTY'S CYCLE CENTER**

453 Avon Belden Rd. Avon  
Lake, OH 44012 440-933-  
4204

**MOUNTAIN ROAD CYCLES**

100 Industrial Parkway  
Chagrin Falls, OH 44022  
440-247-7662

109 South St.  
Chardon, OH 44024  
440-279-0374

**OHIO CITY BICYCLE CO-OP**

1840 Columbus Rd.  
Cleveland, OH 44113  
216-830-2667

**THE BICYCLE HUB**

Mobile Bike Repair  
440-606-5050

**SIXTH CITY CYCLES**

4274 Pearl Road  
Cleveland, Ohio 44109  
216-282-7794

**THE BIKE SPOT**

13618 Detroit Avenue  
Lakewood, OH 44107  
216-712-6594

**SPIN BIKE SHOP**

14515 Madison Ave.  
Lakewood, OH 44107  
216-521-7746

4462 Weymouth Rd.  
Medina, OH 44256  
330-952-0599

**OBERLIN BIKE SHOP**

23 Main St.  
Oberlin, OH 44074  
440-776-8600

**UPCYCLE BIKE SHOP**

10001 Lorain Ave.  
Cleveland, OH 44111 216-  
334-2453

**CEDAR LEE BIKES**

2309 Lee Road  
Cleveland Heights, OH 44118  
216-471-8160

**REVOLUTION CYCLE CLE**

Mobile Bike Repair  
216-217-9545

**THE VELO HOUSE**

570 Dover Center Road  
Bay Village, OH 44140  
1-440-385-6790

**PEDEGO ELECTRIC BIKES**

1593 Main Street  
Peninsula, OH 44264  
330-657-4046

**REDS BICYCLE SALES &  
REPAIR**

36081 Lakeshore Blvd, #1  
Eastlake, OH 44095  
216-347-7600

**Support your local  
bike shop!**

## LOOKING FOR MORE WAYS TO GET PLUGGED INTO THE THRIVING BICYCLE CULTURE IN GREATER CLEVELAND?

### OHIO CITY BICYCLE CO-OP

The OCBC is a non-profit, volunteer-driven, bicycle cooperative and education center. They accept donations of used bikes (or anything bicycle shaped or related) and make those bicycles, parts, and accessories available at low or no cost. Bikes are fully refurbished and offered for sale to support OCBC's programs, or awarded to program participants. They also offer a regular series of bike maintenance classes, public shop use to work on your own bike and learn from fellow volunteers and shop users, and a wide selection of bikes, parts, and accessories. Learn more at [OhioCityCycles.org](http://OhioCityCycles.org).

### VILLAGE BICYCLE CO-OP

Village Bicycle Cooperative is a nonprofit volunteer based organization whose mission is to offer a bicycle education-based workspace and advocate for bicycling to foster a healthier, safer, and more sustainable community. Learn more at [VillageBicycle.org](http://VillageBicycle.org).

## SPORT FACILITIES AND CLUBS

### CLEVELAND VELODROME

The Cleveland Velodrome is a 166 meter Olympic style bicycle racing track located in the Slavic Village neighborhood of Cleveland. The track offers riding classes, scheduled races, and open track times for adults and youth. Learn more at [ClevelandVelodrome.org](http://ClevelandVelodrome.org).

### RAY'S MTB INDOOR PARK

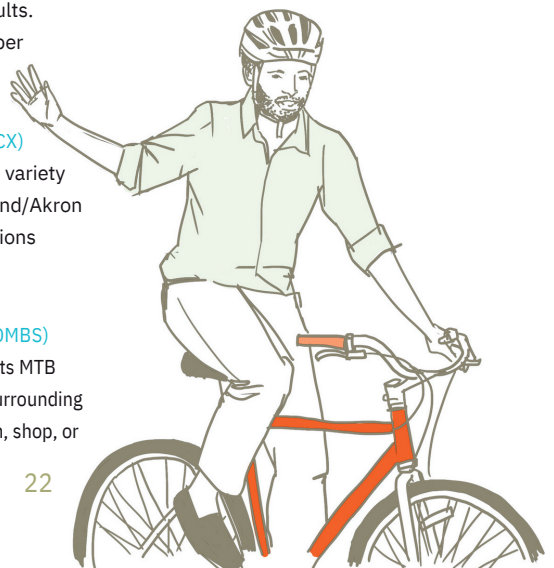
Ray's Indoor Bike Park offers a family-friendly experience to bicycle riders of all levels. A full range of rental bike options are available and the safety equipment is offered at no charge. Admission prices range from \$21-\$27 for adults. Ray's is a seasonal business open from October through April. Learn more at [RaysMTB.com](http://RaysMTB.com).

### NORTHEAST OHIO CYCLOCROSS SERIES (NEOCX)

NEOCX is a race series that is sponsored by a variety of clubs and teams in and around the Cleveland/Akron area. For a complete schedule and race locations visit [NEOCx.com](http://NEOCx.com).

### NORTHERN OHIO MOUNTAIN BIKE SERIES (NOMBS)

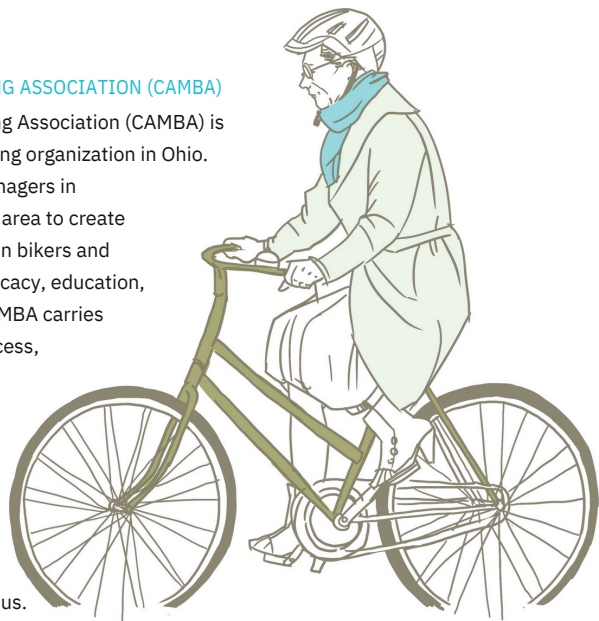
Northern Ohio Mountain Bike Series is a grassroots MTB race series serving riders of Northern Ohio and surrounding areas. Each NOMBS race is put on by a local team, shop, or trail advocacy group. Learn more at [northernohiomountainbikeseries.com](http://northernohiomountainbikeseries.com).



### CLEVELAND AREA MOUNTAIN BIKING ASSOCIATION (CAMBA)

The Cleveland Area Mountain Biking Association (CAMBA) is the largest nonprofit mountain biking organization in Ohio.

Their members work with land managers in Cuyahoga County and surrounding area to create trails and trail systems for mountain bikers and other users to enjoy. Through advocacy, education, and recreational opportunities, CAMBA carries out its mission to promote land access, trail preservation, and new trail development to enhance mountain bike touring, racing, fun, and fellowship. CAMBA is a chapter of the International Mountain Biking Association. Learn more at [Camba.us](http://Camba.us).



### CLEVELAND CYCLING ACADEMY

The Cleveland Cycling Academy is a nonprofit youth development and competitive cycling program based in Northeast Ohio that focuses on identifying, mentoring, and supporting young riders who want to compete at local, regional, and national levels. Beyond racing, the academy emphasizes building skills, confidence, and teamwork while helping remove financial and access barriers that can make it difficult for youth to get started in competitive cycling. Learn more at [ClevelandCyclingAcademy.org](http://ClevelandCyclingAcademy.org)

## LOCAL BIKE CLUBS

### CLEVELAND TOURING CLUB

The Cleveland Touring Club supports group road riding for fun and fitness along with social activities. Most rides start in Eastern Cuyahoga, Lake and Geauga counties. The club supports safe road riding advocacy and other causes. Join CTC at [ClevelandTouringClub.org](http://ClevelandTouringClub.org).

### LAKE ERIE WHEELERS

The Lake Erie Wheelers is a bicycle club whose members reside in Greater Cleveland. Members of the club participate in all facets of cycling: touring, recreation, fitness, mountain biking, and racing. The club has several group rides a week and offers skills clinics. Learn more or check out the ride schedule at [LakeErieWheelers.org](http://LakeErieWheelers.org).

### AKRON BIKE CLUB

Akron Bicycle Club is a member-based club that rides on most days, including, as weather permits, during winter. Ride details are posted at [AkronBike.org](http://AkronBike.org). Join us!

## OTHER LOCAL BIKE CLUBS

### BLACK GIRLS DO BIKE

(Cleveland and Akron Chapters)  
BlackGirlsDoBike.com/chapters

### LORAIN COUNTY BICYCLE CLUB

LorainCountyBicycleClub.org

### SILVER WHEELS CYCLING

Silverwheelscycling.com

### BIKE MEDINA COUNTY

\_BikeMedinaCounty.com

## SOCIAL RIDES

### CLEVELAND CRITICAL MASS

Cleveland Critical Mass meets the last Friday of every month at Public Square in downtown Cleveland at 6:30pm and departs promptly at 7 p.m. Typically the ride ends at a local establishment so people can socialize. Learn more at [Facebook.com/ClevelandCriticalMass](https://www.facebook.com/ClevelandCriticalMass)



## SLOW ROLL CLEVELAND



Slow Roll Cleveland is a mass happening, a leisurely paced parade of bikes through the nooks and corners of the urban environment. Their 10-mile rides each Monday night throughout the warmer months attract hundreds of riders of diverse backgrounds and experience levels. Rides are fully supported by Slow Roll's one and only Squad: a crack unit of yellow-shirted volunteers who keep the ride safe and running smoothly each week. Learn about their next ride at [SlowRollCleveland.org](https://www.SlowRollCleveland.org).



For a complete list of Greater Cleveland cycling events visit [BikeCleveland.org/events](https://www.BikeCleveland.org/events)

# MEMBERSHIP MATTERS!

Now that you know how to make biking part of your everyday routine, you can become a member of Bike Cleveland and help make our community more bike-friendly.

By joining Bike Cleveland, you'll add your voice to a growing movement for safe streets. You'll also stay in the know, receiving news and updates on Bike Cleveland and Cleveland-area bike events.

Want to become a Bike Cleveland member today? Great! Sign up online at [BikeCleveland.org](http://BikeCleveland.org), or fill out and mail this handy form.

## MEMBERSHIP LEVEL

- \$35, Individual
- \$70, Two-Year Individual\*
- \$60, Family (2 Cards)
- \$20, Student/Limited Income \$20
- Other Donation (please specify:)

\*Two-year membership comes with a FREE Bike Cleveland T-Shirt.

SIZE  
(Specify your size: Unisex S/M/L/XL/2XL)

\$

YOUR TOTAL

## PAYMENT OPTIONS

- Check (payable to Bike Cleveland)
- Credit Card (Visa or MasterCard)

NAME ON CARD

EXPIRATION DATE

CARD NUMBER

SECURITY CODE

SIGNATURE

please continue on to the back

Mail this form (and your check, if applicable) to:  
Bike Cleveland  
1900 Superior Avenue, Suite 120  
Cleveland, OH 44114  
Or drop us an email: [info@bikecleveland.org](mailto:info@bikecleveland.org)

## CONTACT INFORMATION

FIRST NAME

LAST NAME

ADDRESS

CITY

STATE

ZIP

EMAIL

NAME OF ADDITIONAL FAMILY MEMBER (FOR FAMILY MEMBERSHIP)

EMAIL OF ADDITIONAL FAMILY MEMBER (FOR FAMILY MEMBERSHIP)

---

## WE WANT TO HEAR FROM YOU!

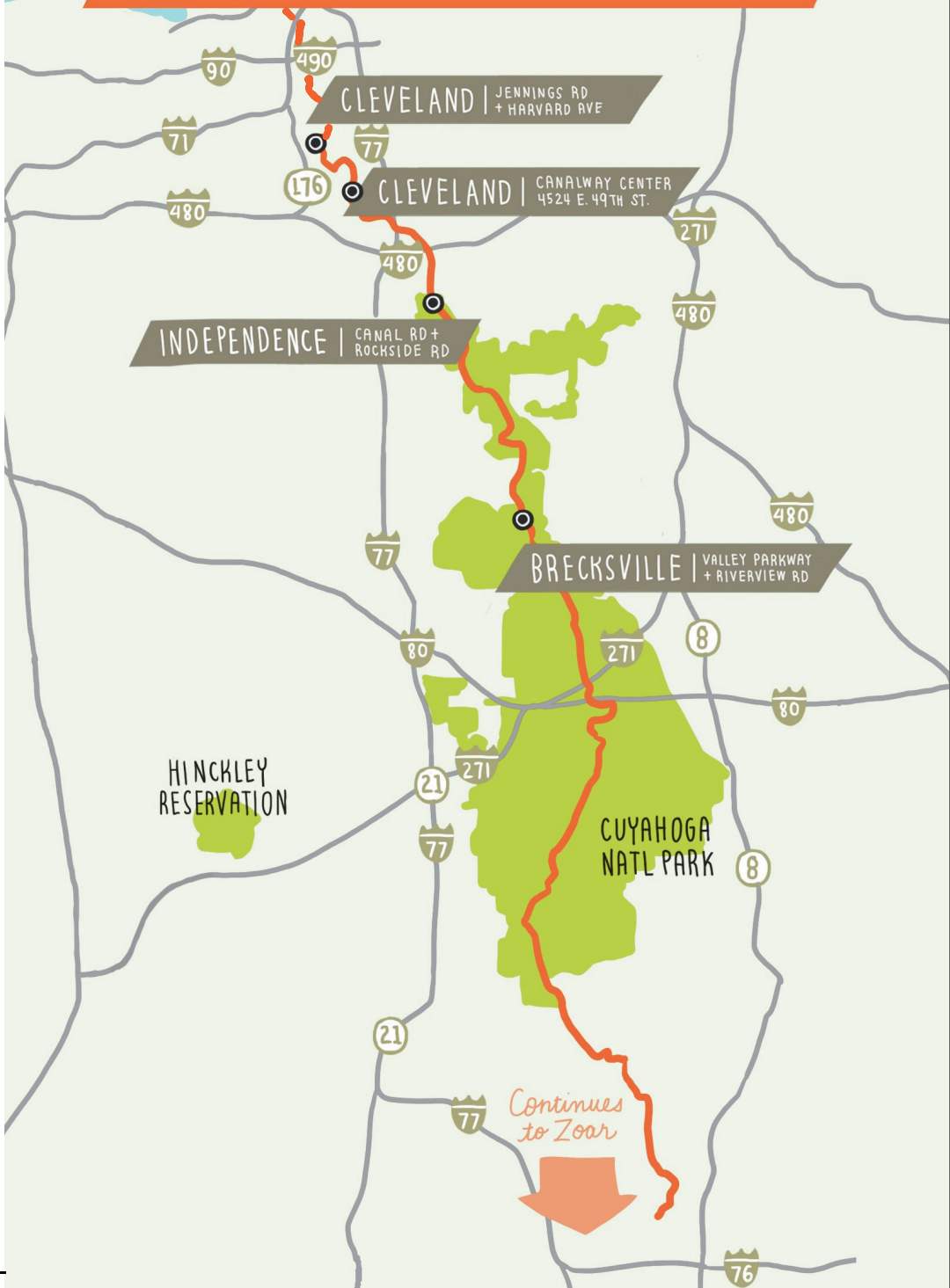
Your feedback will help ensure future editions of this guide address all your biking questions and concerns.

What did you like about Biking in Cleveland: A Guide?  
In what ways could we make it more helpful?

Where did you pick up your copy?

Lake Erie

# OHIO AND ERIE CANAL TOWPATH TRAIL AND ACCESS POINTS





# KEN KNABE

## Greater Cleveland's Bike Attorney

Protecting Greater Cleveland's Cyclists  
from the Ground Up!

**Bike Cleveland Guardian of Sustainability Award \* Author: *Cycling Rights*  
League of American Bicyclists Bicycle Friendly Business 2021-2025**

### CYCLIST HIT BY UNSAFE DRIVER: "P.H.O.N.E.!"

- P** – Call Police: **INSIST** on a report!
- H** – Health: Seek immediate medical treatment if injured.
- O** – Observe: Driver & witness info/insurance/license plate.
- N** – Notify: Call an experienced bike injury attorney. That's me!  
Adjusters are insurance pros - hire a pro for yourself.
- E** – Evidence: Photograph & preserve **ALL** bodily/bike/accessory damage.

### CYCLING LAW ARSENAL: OHIO REVISED CODE (ORC)

- 3 ft. safe passing distance: ORC 4511.27(A)(1).
- Proceed if red light malfunctioning/won't trip, **BUT** proceed only if **SAFE** to do so: ORC 4511.132(A).
- No BMV Points for bike traffic offense except DUI: ORC 4511.52(B)&(D).
- Ride on road except closed access highways/freeways: ORC 4511.051(A)(2).
- Ride to the right unless unsafe/impractical/hazardous: ORC 4511.55(A)&(C).
- Take lane if so narrow, car can't safely pass: ORC 4511.55(C).
- Ride no more than two abreast on road: ORC 4511.55(B).
- "Dooring": car door opens into cyclist: ORC 4511.70(C).



**KNABE LAW FIRM**  
Protecting Cleveland's Cyclists

**Knabe Law Firm Co., L.P.A.**  
14222 Madison Avenue  
Cleveland, OH 44107  
(216) 228-7200  
[ken@klfohio.com](mailto:ken@klfohio.com)



**KNABE LAW FIRM**  
Protecting Cleveland's Cyclists

# Don't let a cycling crash turn your life upside down.



...and **DON'T** try to fight insurance companies on your own!

Call Ohio's bike lawyer Steve Magas, a Cleveland native and avid cyclist who has represented hundreds of riders throughout Ohio in significant cycling injury and death claims.

Our crash cards explain exactly what to do if you are in a crash. Contact us today for your **FREE** crash cards and get the law AND the Ohio Bike Lawyer on your side!



STEVE MAGAS **BIKE LAWYER**  
513 484-BIKE  
Bikelawyer@me.com



Ohiobikelawyer.com



# Joy Machines Bike Shop

Home of  
The Bike



"We take 'em apart and  
put 'em back together"



We got what you want



Cash? Accepted  
Apple Pay? Accepted  
AmEx? Accepted  
Discover? Accepted  
Mastercard? Accepted  
Visa? Accepted

- ★ Non-electric & electric e-bike sales, service, and rentals
- ★ Want a \$600 bike? We got it.
- ★ Want a custom \$6,000 bike? Let's get it done.

Plenty of  
kickstands at the  
going rate



¡Se habla español!

"You can buy a cheaper bike, but then you gotta ride it!"



You can call or email, but we'd love it if you stopped by

Phone: 216 - 39 4 - 0 2 3 0 | 2605 Detroit Ave, Cleveland, OH 44113 | alex@joymachines.net

7427 DETROIT AVE. CLEVELAND, OH 44102

(216) 218-1811

HAND BUILT QUALITY FRAME SETS-  
FRAME REPAIR & REARRANGEMENT  
BY  BICYCLES

SALES.SERVICE.RESTORATION.

# BLAZING SADDLE CYCLE

YOUR FRIENDLY NEIGHBORHOOD BIKE SHOP

## CLEVELAND'S PREMIER BIKE TOUR!



REGISTER

Powered by

 Knabe Law Firm  
Protecting Cyclists

# *the* Broadway Cyclery

\* Sales \* Service \* Accessories \* Rentals \*



We provide the finest bikes and equipment  
for your cycling adventure.

*Pedal to the People!*

665 Broadway Ave. Bedford, OH 44146  
[www.thebroadwaycyclery.com](http://www.thebroadwaycyclery.com)

440.735.2453

# Join your Neighborhood Better Streets Committee!

*Shaping streets that work for all of us*



<https://bit.ly/4bkbyXm>



## ABOUT BIKE CLEVELAND

Bike Cleveland is a powerful membership-based bicycle advocacy organization working to creating a region that is sustainable, connected, healthy, and vibrant by promoting bicycling and advocating for safe and equitable transportation for all. Through daily advocacy and education we are working to make our streets safer and our neighborhoods better places to live. Learn more and join Bike Cleveland at [BikeCleveland.org](http://BikeCleveland.org).

